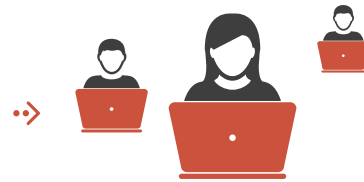
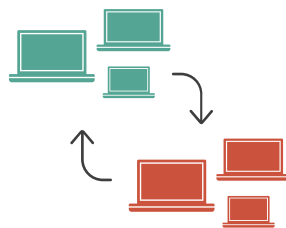




# Move/Add/Change (MAC) Services

Regardless of how your business or school's operations change, one priority remains the same—maximizing your employees' or students' productivity. A key component of that is ensuring they have constant access to up-to-date and reliable hardware and software. Whether you're moving to a new location; upgrading to a new operating system; or replacing end-of-life desktops and laptops, executing changes quickly and effectively is critical.

At Attronica, we understand this can be a large undertaking for any organization. That's why we offer our Move/Add/Change Services Suite. Rather than trying to manage it alone, let Attronica's technology experts partner with you—and deliver your Hardware Moves, Adds and Changes in a quick and cost-effective manner, with virtually no user downtime.



## KEY BENEFITS

- » **Ensure maximum employee or student productivity** and limit interruptions by conducting MAC activities during off and non-working hours.
- » **No additional headcount is needed.** Attronica will staff all resources and provides a complete turnkey solution.
- » **Share costs** with your internal partners, resulting in little bottom-line impact to your IT budget.

## KEY FEATURES



**Moving to or opening a new office or classroom?** Attronica's white-glove MAC Services ensure your staff or students never become separated from their laptops or desktops—regardless of how your organization's location(s) physically change.



**Full MAC lifecycle:** We can pick up your laptop or desktop at the end of one workday and deliver a new one the next workday—with no loss of worktime or data.



**Update existing assets quickly and effectively:** Easily add new components or software to assets that are already in your office or classroom.

**CALL US TODAY: 877-753-8997**



Attronica can tailor your Move/Add/Change solution depending on your specific needs. Call us today at **877-753-8997** and we'll do a **free survey** of your hardware and software needs to determine the best approach, benefits and savings with an Attronica-delivered solution.